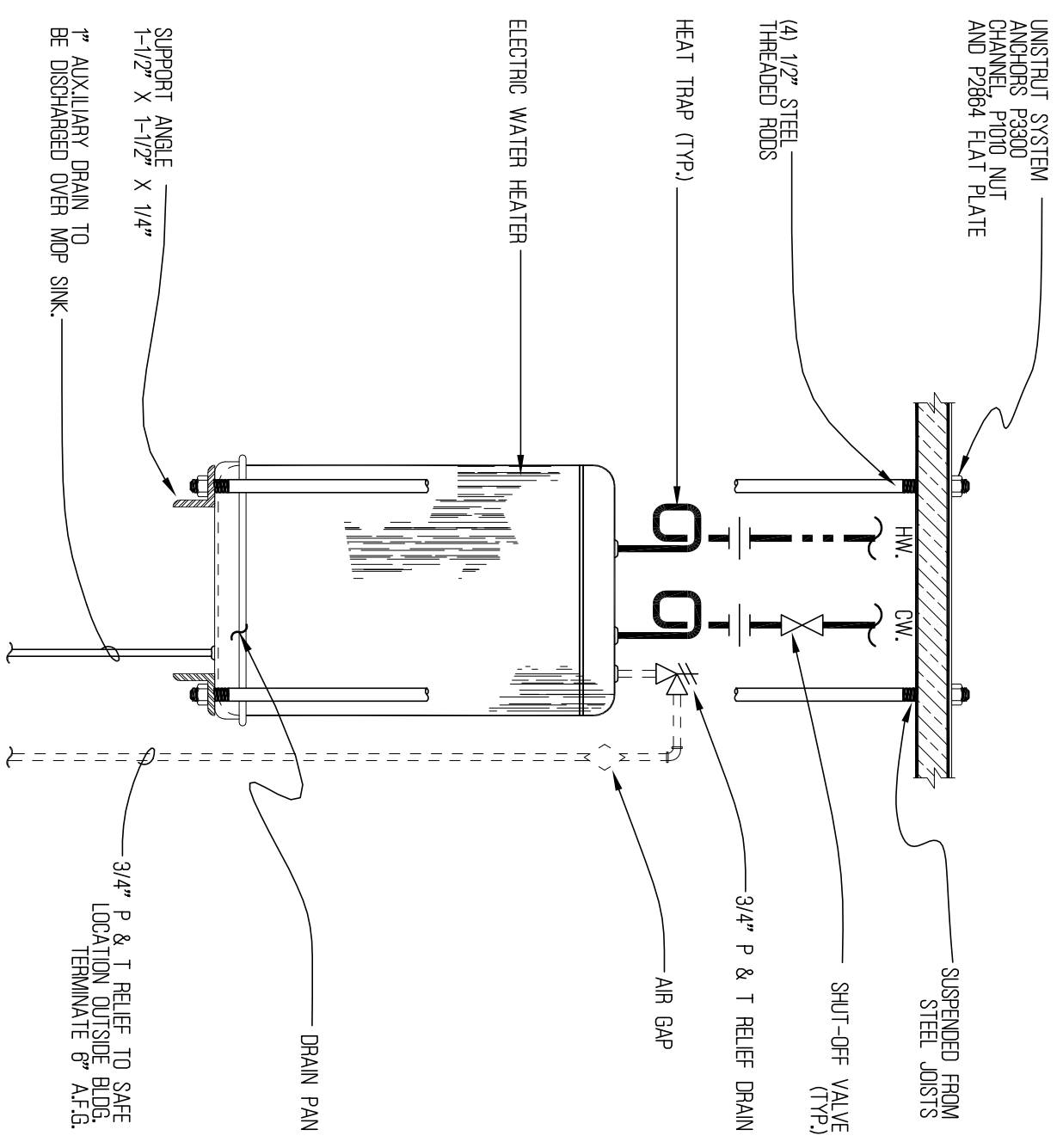


CLEAN-OUT TEE & ACCESS COVER

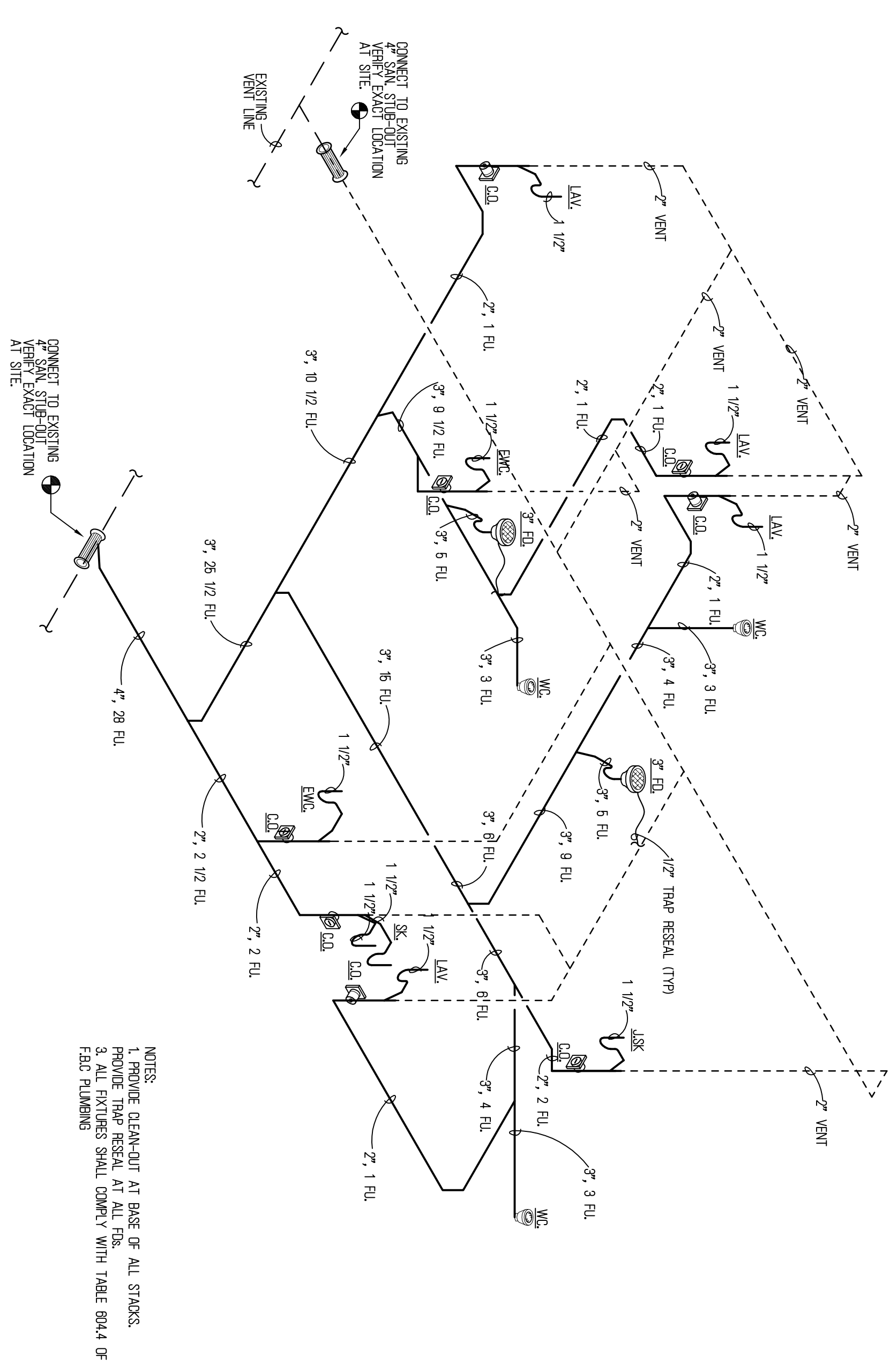
NTS



EW-H-1: 3.6 KW. (2771/160)

WATER HEATER DETAIL

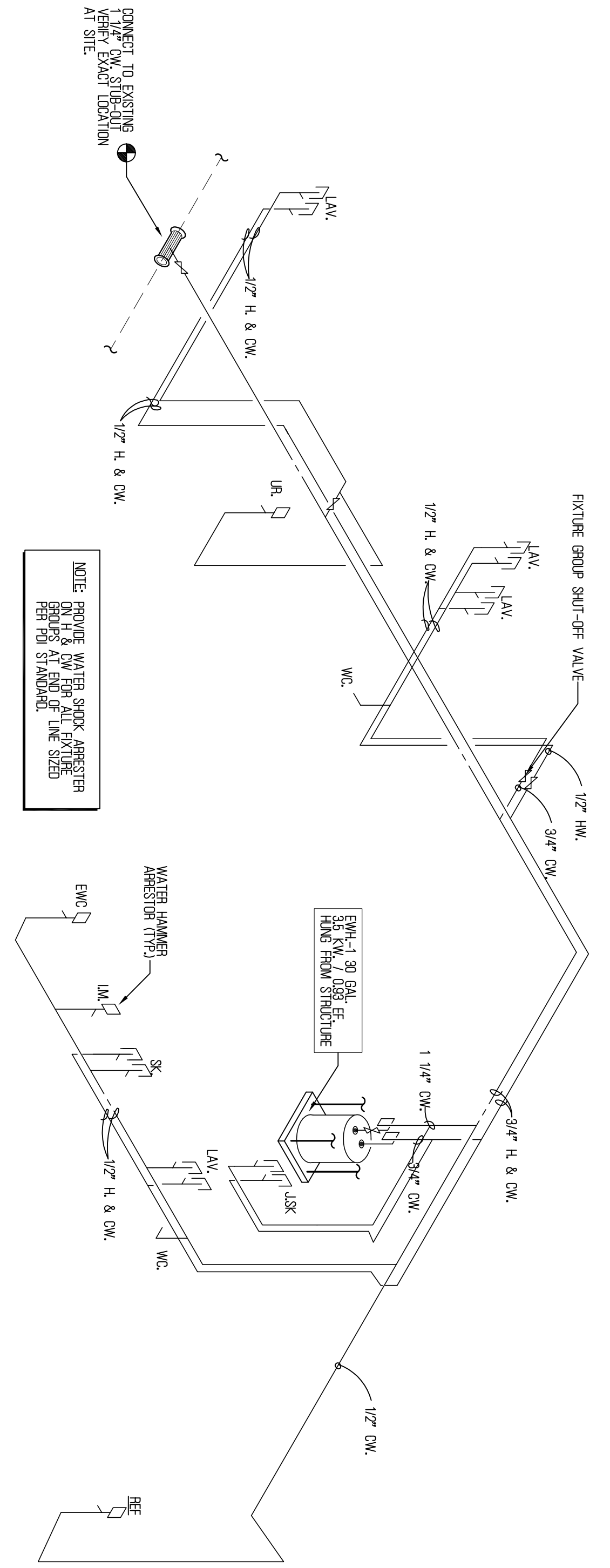
NTS



NOTES:
1. PROVIDE CLEAN-OUT AT BASE OF ALL STACKS.
2. PROVIDE TAP RESER. AT ALL TEE'S.
3. ALL CLEAN-OUTS SHALL COMPLY WITH TABLE 804.4 OF FBIC PLUMBING

SANITARY ISOMETRICS

NTS



NOTE: PROVIDE WATER STOP ARRESTER PER ALL FIXTURES PER PDI STANDARD

WATER ISOMETRIC

NTS

Seal

project: 20090101

Plumbing Isometrics

P-2 SHEET

revisions

| NO. | DATE | BY |
|-----|------|----|
| 1 | | |

drawn by: V.P./C.T./S.M.
checked by: T.M.
date: 5-6-09

consultants

Interior Improvement - Private Club

3020 NE 32 Ave. #123
Ft. Lauderdale, Florida 33308

FTC Foundation
17630 NW 78 Ave. Suite 207
Palm Springs, Florida, 33015

GeckoGroup Inc.

architectural engineering construction
305-434-4442 office 305-434-4441 fax
150 melrose avenue, coral gables 33134

ANADONOSIS GIGONDI/28 EMBROSOMOS
ARCHITECTS
REGISTERED PROFESSIONAL ENGINEER
ARCHITECT