

MOUNTING: FLUSH SHORT CIRCUIT RATING: 25K AC LOCATION: WAREHOUSE		PANEL "H"										VOLTS: 277/480V, 3ø, 4W MAIN BUS AMPS: 100A MAIN BREAKER AMPS: 100A/60P	
LOAD SERVED	WIRE AND COND SIZE	LOAD	TRIP	Ckt No.	PHASE A B C	Ckt No.	TRIP	LOAD	WIRE AND COND SIZE	LOAD SERVED			
ELECTRICAL WATER HEATER	#0-3/4"	3600	20	1	•	2	3 / 20	6800	#12-3/4"	HP-1			
PANEL T	#0-3/4"	6000	30	3	•	4	3 / 20	6800	#12-3/4"	HP-2			
VIA TRANSFORMER (T-BKVA)				5	•	6	3 / 20	6800	#12-3/4"	HP-2			
SPACE				7	•	8	3 / 20	6800	#12-3/4"	HP-2			
ILLUMINATION MAIN HALL	#2-3/4"	800	20	1	•	12	3 / 20	6800	#12-3/4"	HP-3			
ILLUMINATION MEETING ROOM	#2-3/4"	1400	20	1	•	14	3 / 20	6800	#12-3/4"	HP-3			
ILLUMINATION PANTRY / TOILET	#2-3/4"	800	20	1	•	16	3 / 20	6800	#12-3/4"	HP-3			
ILLUMINATION MAIN HALL	#2-3/4"	1000	20	1	•	18	3 / 20	6800	#12-3/4"	HP-3			
ILLUMINATION MAIN HALL	#2-3/4"	1000	20	1	•	20	3 / 20	6800	#12-3/4"	HP-3			
SPACE				22	•	24	3 / 20	6800	#12-3/4"	HP-3			
SPACE				25	•	26	3 / 20	6800	#12-3/4"	HP-3			
SPACE				26	•	27	3 / 20	6800	#12-3/4"	HP-3			
SPACE				28	•	29	3 / 20	6800	#12-3/4"	HP-3			
SPACE				29	•	30	3 / 20	6800	#12-3/4"	HP-3			
SPACE				31	•	32	3 / 20	6800	#12-3/4"	HP-3			
SPACE				33	•	34	3 / 20	6800	#12-3/4"	HP-3			
SPACE				35	•	36	3 / 20	6800	#12-3/4"	HP-3			
SPACE				36	•	37	3 / 20	6800	#12-3/4"	HP-3			
SPACE				37	•	38	3 / 20	6800	#12-3/4"	HP-3			
SPACE				38	•	39	3 / 20	6800	#12-3/4"	HP-3			
SPACE				39	•	40	3 / 20	6800	#12-3/4"	HP-3			
SPACE				41	•	42	3 / 20	6800	#12-3/4"	HP-3			

TOTAL CONNECTED LOAD : 46220 VA 64 AMPS

VERIFY EXACT LOCATION AND EQUIPMENT PLATE PRIOR TO ROUGH INSTALLATION.

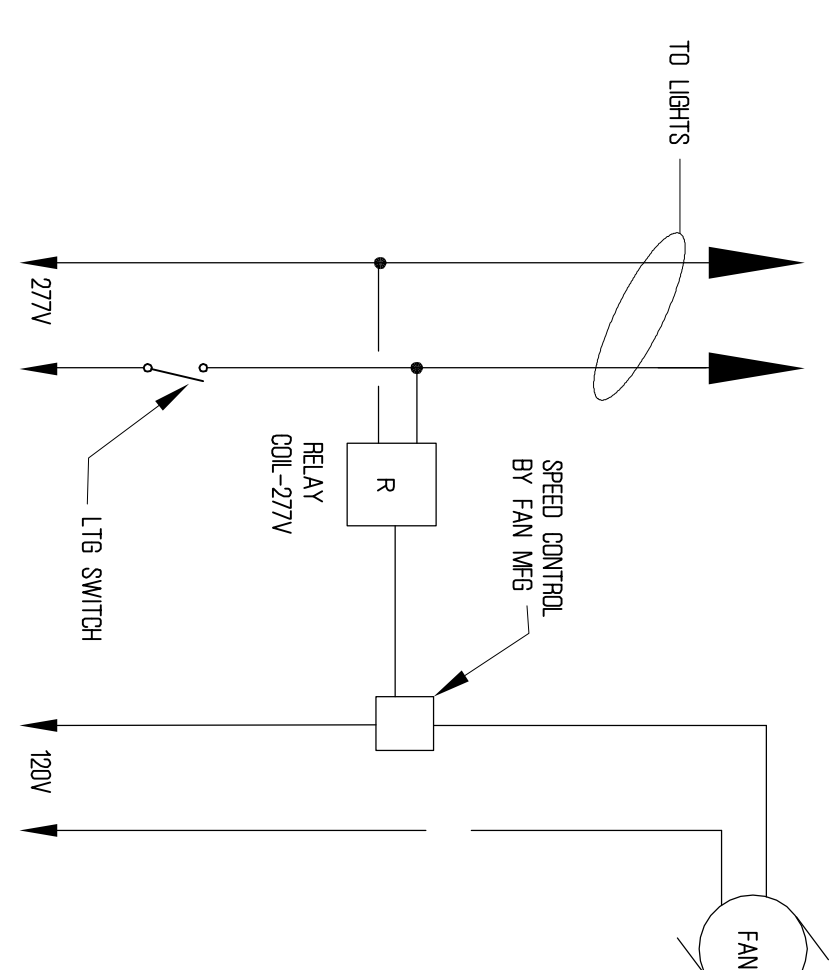
MOUNTING: FLUSH SHORT CIRCUIT RATING: 25K AC LOCATION: WAREHOUSE		PANEL "J"										VOLTS: 200/208V, 3ø, 4W MAIN BUS AMPS: 125A MAIN BREAKER AMPS: 80A/60P	
LOAD SERVED	WIRE AND COND SIZE	LOAD	TRIP	Ckt No.	PHASE A B C	Ckt No.	TRIP	LOAD	WIRE AND COND SIZE	LOAD SERVED			
RECEPTACLES FOR MAIN HALL	#12-1/2"	720	20	1	•	2	1 / 20	800	#12-1/2"	DRINKING EQUIPMENT			
RECEPTACLES FOR MAIN HALL	#12-1/2"	720	20	1	•	4	1 / 20	800	#12-1/2"	WENDING MACHINE			
RECEPTACLES FOR MAIN HALL	#12-1/2"	720	20	1	•	6	1 / 20	800	#12-1/2"	ICE MAKER			
MODIFIED DAMPEN	#12-1/2"	200	20	1	•	8	1 / 20	1200	#10-1/2"	SPACE			
SPACE				9	•	10	1 / 20	1200	#12-1/2"	DISHWASHER			
SPACE				11	•	12	1 / 20	720	#12-1/2"	RECEPTACLE FOR PANTRY			
RECEPTACLES FOR MEETING ROOM	#12-1/2"	720	20	1	•	14	1 / 20	1800	#12-1/2"	REHEATER/DISH			
RECEPTACLES FOR MEETING ROOM	#12-1/2"	720	20	1	•	16	1 / 20	200	#10-1/2"	FF FIBR TOILET			
CEILING FROTECTION MODIFIED	#10-1/2"	200	20	1	•	18	1 / 20	200	SPACE				
SPACE				21	•	22	1 / 20	200	SPACE				
SPACE				23	•	24	1 / 20	200	SPACE				
SPACE				25	•	26	1 / 20	200	SPACE				
SPACE				27	•	28	1 / 20	200	SPACE				
SPACE				29	•	30	1 / 20	200	SPACE				

TOTAL CONNECTED LOAD : SEE DEMAND LOAD

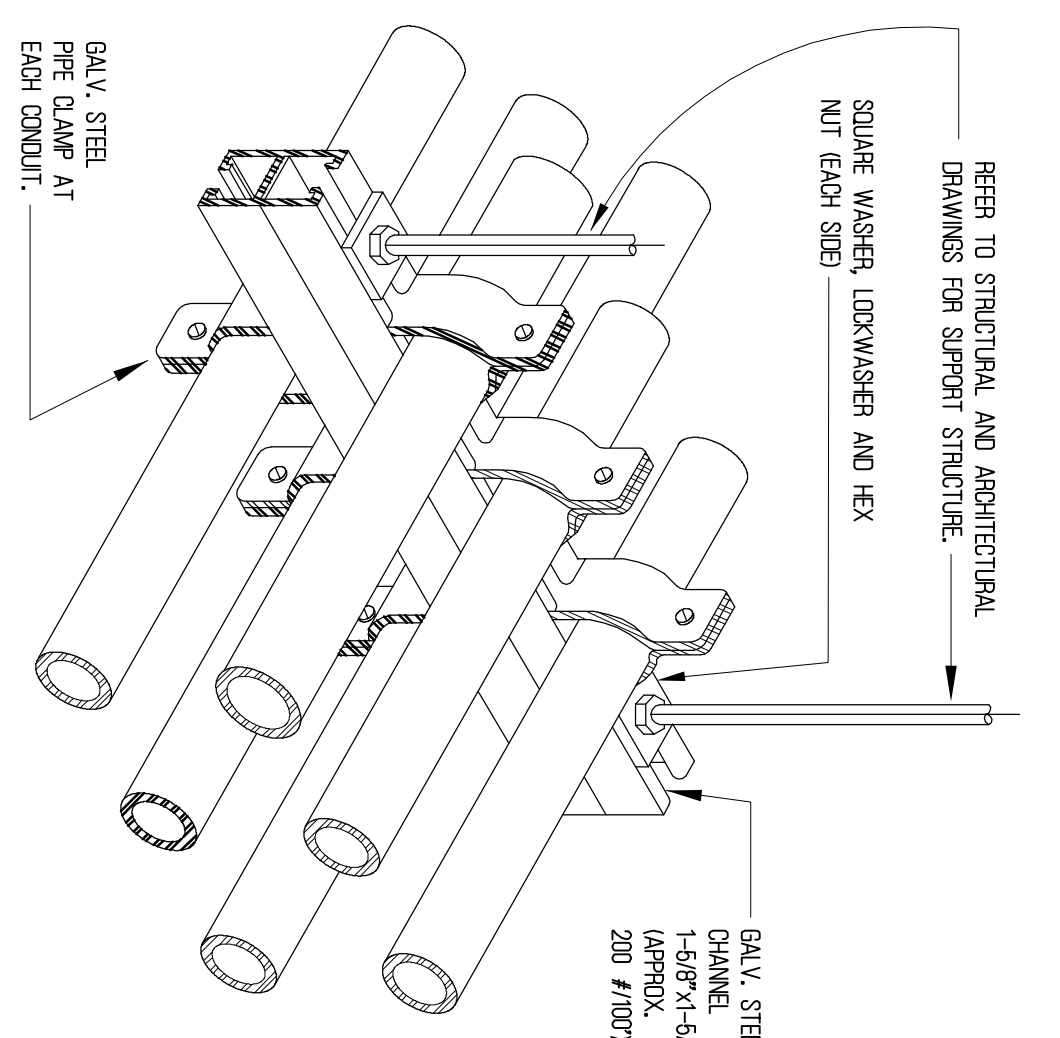
VERIFY EXACT LOCATION AND EQUIPMENT PLATE PRIOR TO ROUGH INSTALLATION.

ESTIMATED DEMAND LOAD
RECEPTACLES - 4320 VA
OTHER LOADS - 6800 VA
DEMAND LOAD - 10320 VA
30 AMPS

- NOTES:
1. ALL MAINS SHALL BE SERVICE RATED.
 2. THE AVAILABLE FAULT CURRENT FROM THE UTILITY POWER COMPANY IS TO BE VERIFIED FOR PROPER ALIAS, RATING OF ELECTRICAL SERVICE EQUIPMENT AND PANELS. SHOP DRAWING SUBMITTAL TO INCLUDE ALIAS RATING AND LETTER FROM THE UTILITY POWER COMPANY STATING THE AVAILABLE FAULT.

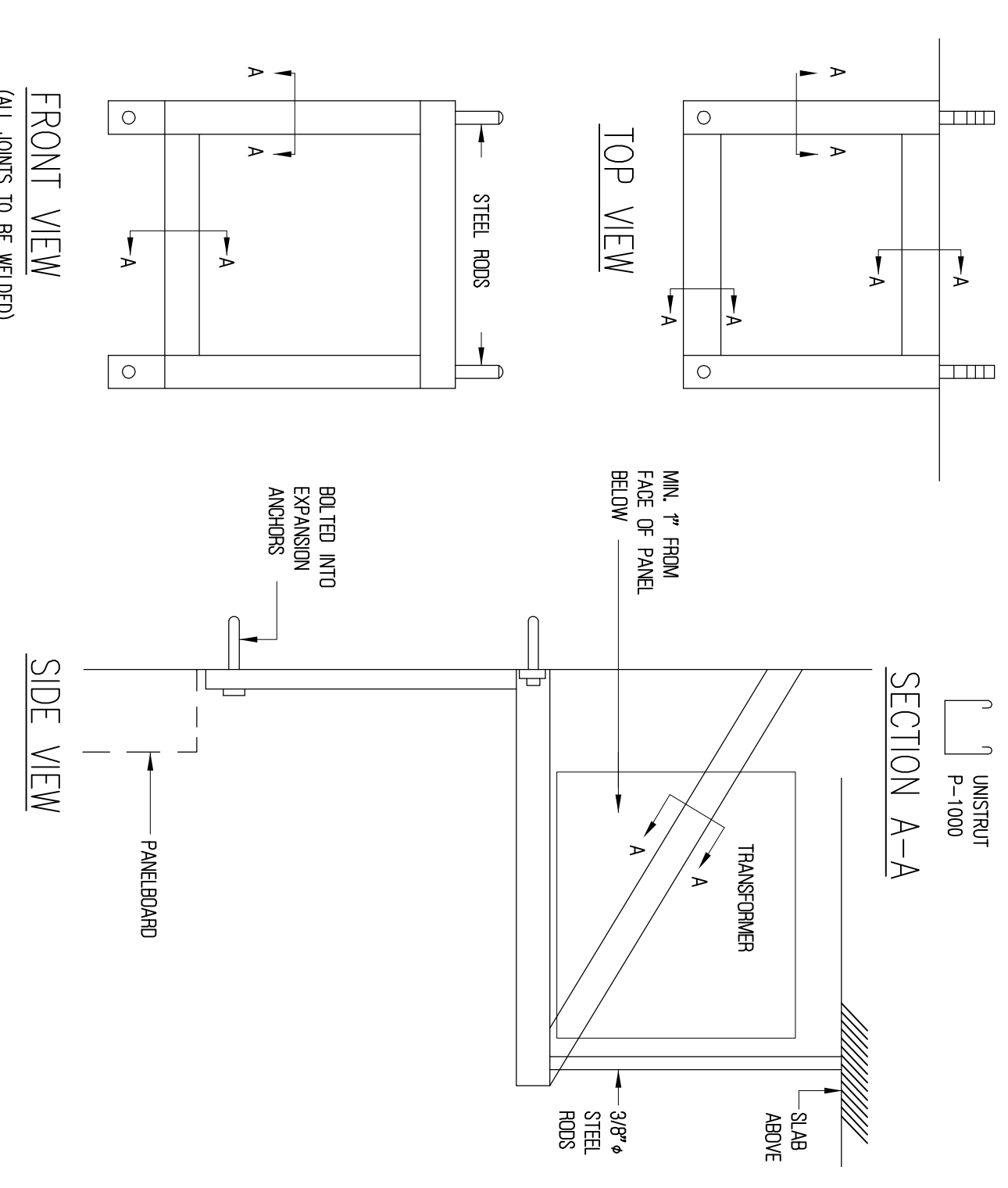


FAN CONTROL FOR TOILET
N.T.S.

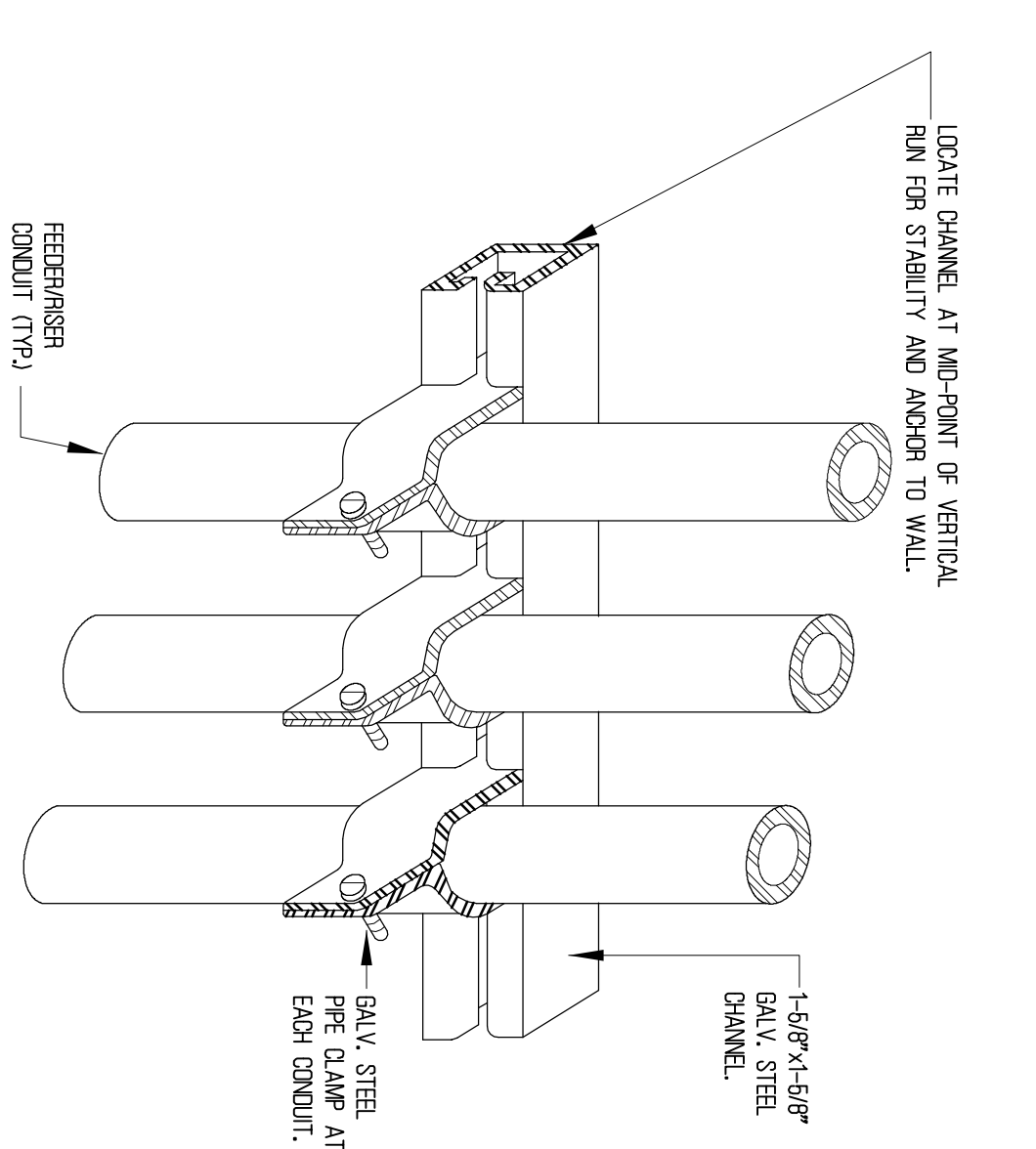


CEILING CONDUIT SUPPORT DETAIL
N.T.S.

COORDINATE CONDUIT ROUTING WITH HVAC DUCT.



DETAILS-TRANSFORMER MOUNTING BRACKET



WALL CONDUIT SUPPORT DETAIL
N.T.S.