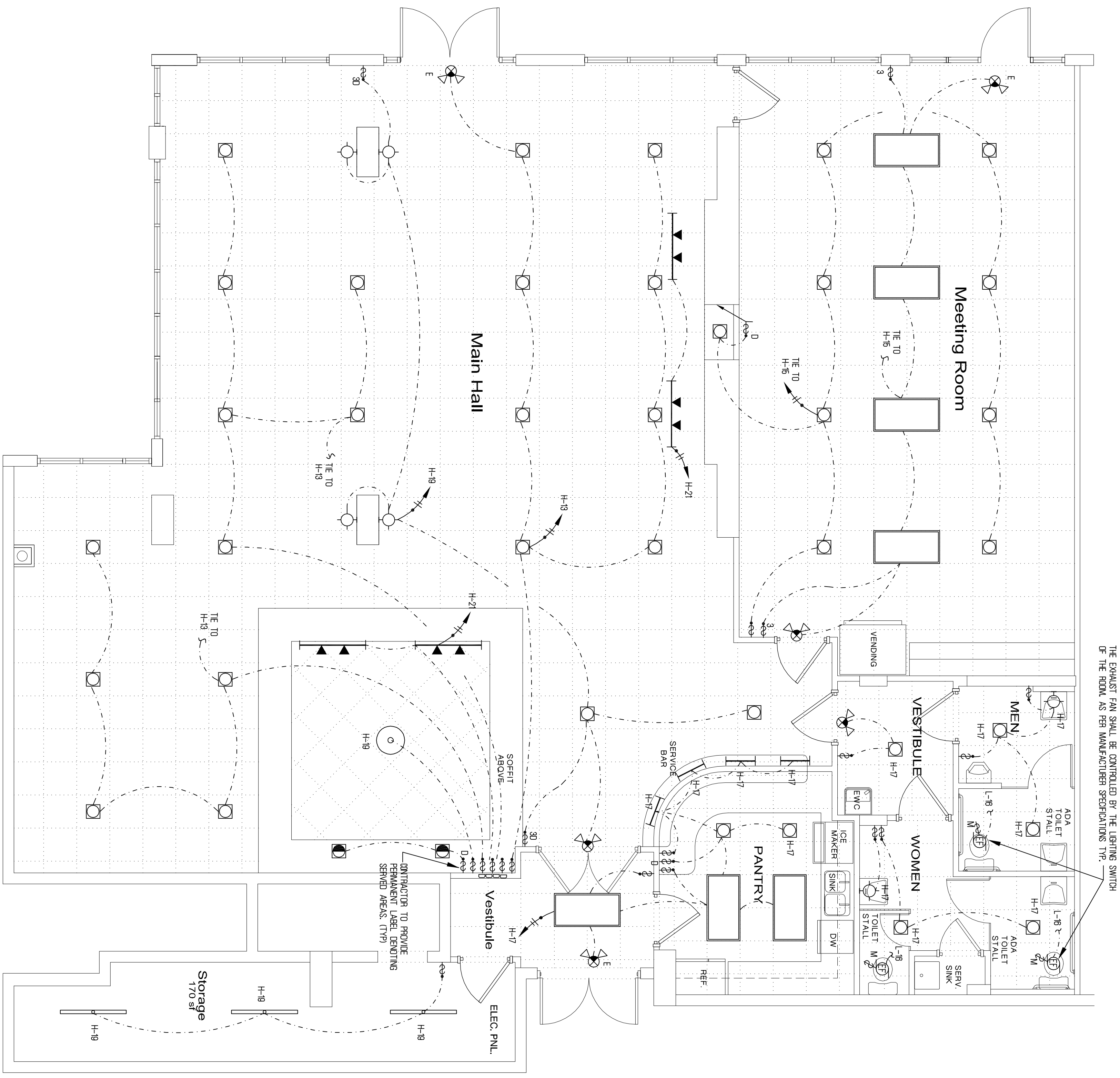


Construction Documents

NO.	DATE	BY	REVISIONS

drawn by: Y.P./C.T./S.M.
 checked by: T.M.
 date: 5/26/09
 consultants



Electrical Lighting Plan
 SCALE: 1/4" = 1'-0"

ELECTRICAL LEGEND				
⊖	20A, 120V, DUPLEX RECEPTACLE WALL MOUNTED	⊖	DOWNLIGHT FIXTURE	TO BE DETERMINED BY OWNER
⊖	20A, 120V, SINGLE RECEPTACLE	○	WALL MOUNTED LIGHT FIXTURE	
⊖	20A, 120V, DUPLEX RECEPTACLE	⊖	2X4' FLUORESCENT LIGHT FIXTURE	
⊖	20A, 120V, GROUND FAULT TYPE DUPLEX RECEPTACLE	⊖	2X4' FLUORESCENT LIGHT FIXTURE	
⊖	20A, 120V, GROUND FAULT TYPE ABOVE COUNTER DUPLEX RECEPTACLE	⊖	FLUORESCENT LIGHT FIXTURE SURFACE MOUNTED WITH B. BACK	
⊖	LIGHT SWITCH, SILENT TYPE	⊖	CEILING LIGHT FIXTURE AS SELECTED BY OWNER AND ARCHITECT.	
⊖	LIGHT SWITCH, SILENT TYPE SWAY.	⊖	EXIT LIGHT, 120V, WITH BATTERY BACK UP. DARK AREA INDICATES FACE OF FIXTURE.	
⊖	MOTOR RATED SWITCH	⊖	COMBINATION EMERGENCY AND EXIT LIGHT, 120V, WITH BATTERY BACK UP. DARK AREA INDICATES FACE OF FIXTURE.	
⊖	CEILING OR WALL MOUNTED JUNCTION BOX.	⊖	EMERGENCY LIGHTS AHEAD OF SW LEG ON EACH AREA LIGHTING CIRCUIT, W/ BATTERY BACK-UP 90 MIN	
⊖	FAN MOTORS	⊖	WEATHER PROOF, NEMA 3R ENCLOSURE, WET LOCATION ENCLOSURE	
⊖	TELEPHONE OUTLET WALL MOUNTED.	⊖		
⊖	COMBINATION OF TELEPHONE & DATA OUTLET WALL MOUNTED. VERIFY LOCATIONS WITH OWNER.			
⊖	TELEPHONE OUTLET WALL MOUNTED.			
⊖	ELECTRICAL PANEL			
⊖	ELECTRICAL METER			
⊖	DISCONNECT SWITCH CIRCUIT BREAKER TYPE.			
⊖	DISCONNECT SWITCH SILE HANDLE TYPE			
⊖	FUSE SIZE PER MANUFACTURER OF EQUIPMENT RECOMMENDATIONS			

- GENERAL LIGHTING NOTES**
- ALL FLUORESCENT FIXTURES SHALL HAVE EACH BALLAST PASED.
 - ALL FIXTURES SHALL BE PROPERLY SECURED TO CEILING GRID SYSTEM.
 - VERIFY ALL DIMENSIONS AND LOCATIONS WITH TRAVELER PRIOR TO ROUGH-IN.
 - ALL WORK SHALL BE IN ACCORDANCE WITH THE NATIONAL ELECTRICAL CODE AND OTHER APPLICABLE CODES AND STANDARDS.
 - THE CONTRACTOR IS RESPONSIBLE FOR EVALUATING FIELD CONDITIONS BY VISITING THE SITE PRIOR TO COMMENCEMENT OF WORK.
 - THE CONTRACTOR SHALL SATISFACTORILY REPAIR/REPLACE EQUIPMENT OR PART OF STRUCTURE DAMAGED AS A RESULT OF HIS WORK. SURFACES AND FINISHES SHALL BE RESTORED TO MATCH ADJACENT AREAS.
 - APPROVAL SHALL BE OBTAINED FROM THE ENGINEER PRIOR TO CUTTING OR DRILLING ANY STRUCTURAL SUPPORT MEMBER.
 - ALL CONDUCTORS SHALL BE OCPED.
 - ALL MATERIALS SHALL BE U.L. APPROVED.
 - ALL LUMINAIRES SHALL BE PROPERLY SUPPORTED IN ACCORDANCE WITH THE CEILING SYSTEM MANUFACTURER RECOMMENDATIONS AND LOCAL CODE REQUIREMENTS.
 - ALL LIGHTING CIRCUITS WHICH CONTROL AND/OR OPERATE LIGHTING FIXTURES WITH ELECTRONIC BALLAST SHALL BE PROVIDED WITH A SEPARATE NEUTRAL WIRE PER EACH PHASE.
 - ALL BRANCH CIRCUITS SHALL BE SIZED IN ACCORDANCE WITH NEC, 240-19 REGARDLESS OF SIZES SHOWN ON PLANS OR PANEL SCHEDULES.

THE EXISTING BRANCH CIRCUIT NUMBERS SHOWN ON THIS PLAN ARE FOR REFERENCE ONLY. THE CONTRACTOR SHALL REUSE ALL POSSIBLE EXISTING BRANCH CIRCUITS SERVING THIS AREA, PROVIDE NEW TRIP PANEL SCHEDULES DIRECTORRY REFLECTING EACH RECEPTACLE BREAKER USED.